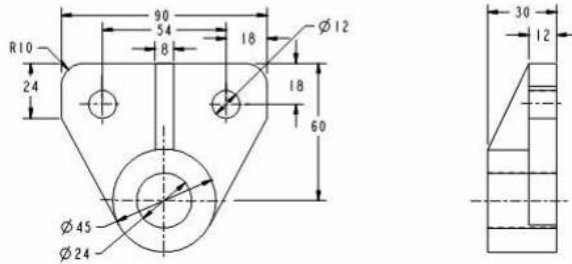
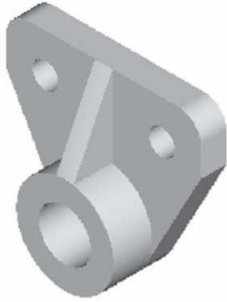
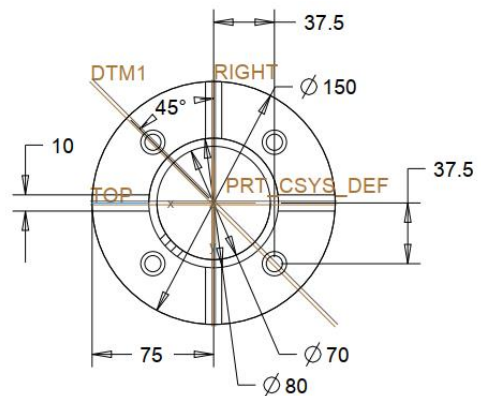
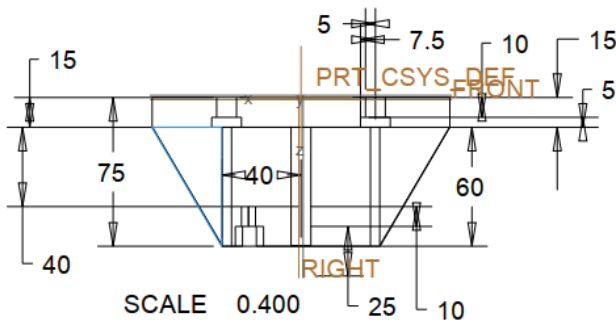
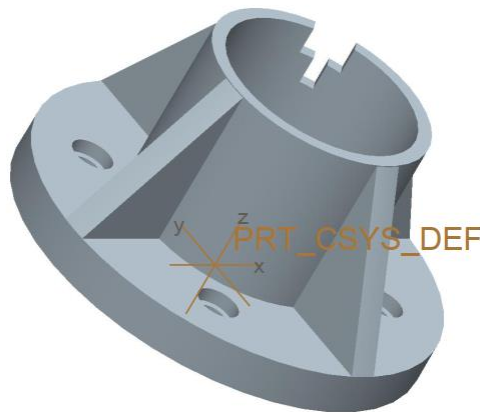


CÁC LỆNH VẼ CƠ BẢN TRÊN PHẦN MỀM CREO

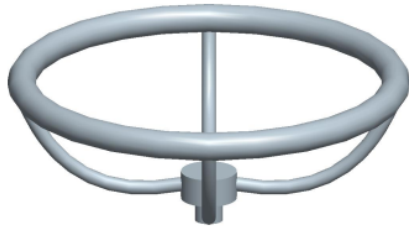
BÀI TẬP 1 : Sử dụng Module Part để vẽ chi tiết sau, sử dụng các lệnh : EXTRUDE, RIB, HOLE



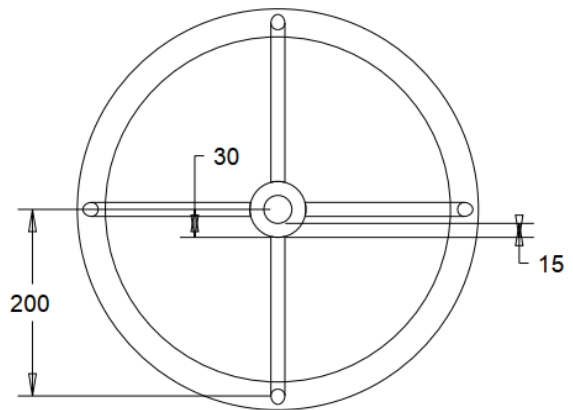
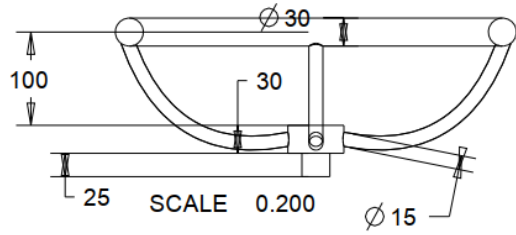
BÀI TẬP 2 : Sử dụng Module Part để vẽ chi tiết sau, sử dụng các lệnh : EXTRUDE, RIB, HOLE, PATTERN



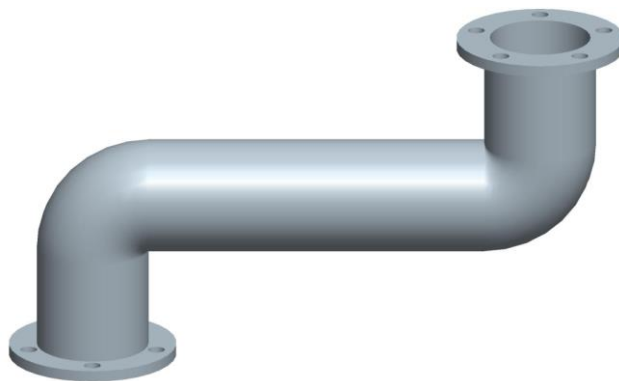
BÀI TẬP 3 : Sử dụng Module Part để vẽ chi tiết sau, sử dụng các lệnh : REVOLVE, SWEEP



SCALE 0.200



BÀI TẬP 4 : Sử dụng Module Part để vẽ chi tiết sau, sử dụng các lệnh : SWEEP, PATTERN, EXTRUDE (các kích thước SV tùy chọn)



Phân luyện tập

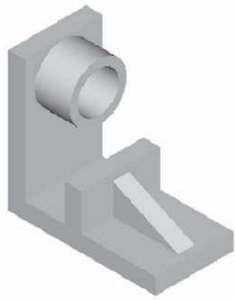


Figure 5-49 Isometric view of the solid model

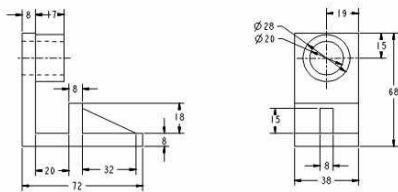


Figure 5-50 Front view and the right-side view of the model for Tutorial 2

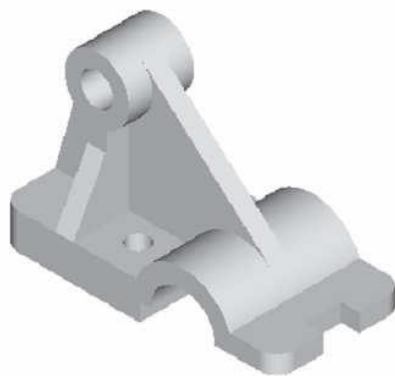
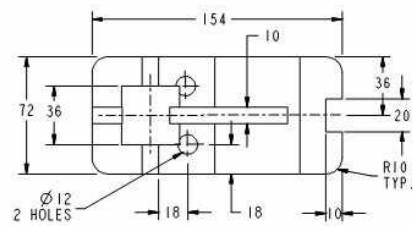
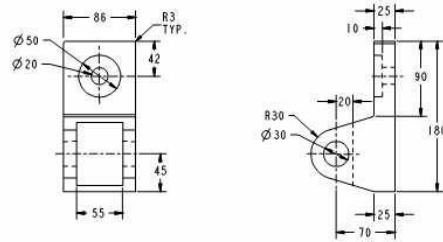


Figure 5-69 Isometric view of the model

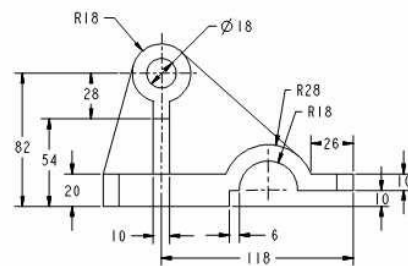


Figure 5-70 Top and front views of the model, hidden lines are suppressed for clarity